

Sample Name: **Rogue**
Tested for: **Extent Solutions Co
Hemp Compliance**

Laboratory ID: 19K0058-06

Matrix: Useable Marijuana

Sample Metrc ID: 1A40105000282FA000000114

Lot # NA

Batch RFID: 1A40105000282FA000000113

Batch Size: 6810 (g)

Strain: Rogue

Harvest Date: 10/15/19

License: AG-R1060126IHH

Date Sampled: 11/06/19 16:42

Date Accepted: 11/07/19



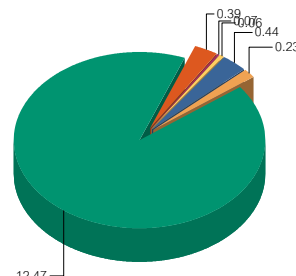
Potency Analysis

Date Extracted: 11/11/19

Analysis Method/SOP: Potency

Date Analyzed: 11/12/19

* - ORELAP certified analyte

Cannabinoids	% weight	mg/g	LOQ (%)	Cannabinoids Profile														
Total THC ((THCA*0.877)+d9)	0.39	3.9	0.03	 <table border="1" data-bbox="1299 1197 1477 1365"> <tr><td>THCA</td><td>0.44</td></tr> <tr><td>CBD</td><td>0.23</td></tr> <tr><td>CBDA</td><td>12.47</td></tr> <tr><td>CBGA</td><td>0.39</td></tr> <tr><td>CBDVA</td><td>0.07</td></tr> <tr><td>CBC</td><td>0.06</td></tr> <tr><td>Total:</td><td>13.66</td></tr> </table>	THCA	0.44	CBD	0.23	CBDA	12.47	CBGA	0.39	CBDVA	0.07	CBC	0.06	Total:	13.66
THCA	0.44																	
CBD	0.23																	
CBDA	12.47																	
CBGA	0.39																	
CBDVA	0.07																	
CBC	0.06																	
Total:	13.66																	
Total CBD ((CBDA*0.877)+CBD)	11.17	111.7	0.03															
d9-THC (d9-Tetrahydrocannabinol)*	< LOQ	< LOQ	0.05															
d8-THC (d8-Tetrahydrocannabinol)*	< LOQ	< LOQ	0.05															
THCA (d9-Tetrahydrocannabinolic Acid)*	0.44	4.4	0.07															
CBD (Cannabidiol)*	0.23	2.3	0.03															
CBDA (Cannabidiolic Acid)*	12.47	124.7	0.07															
CBN (Cannabinol)*	< LOQ	< LOQ	0.03															
CBG (Cannabigerol)*	< LOQ	< LOQ	0.05															
CBGA (Cannabigerolic Acid)	0.39	3.9	0.05															
CBDV (Cannabidivarin)*	< LOQ	< LOQ	0.05															
CBDVA (Cannabidivarinic Acid)	0.07	0.7	0.05															
CBC (Cannabichromene)*	0.06	0.6	0.05															
THCV (Tetrahydrocannabivarin)	< LOQ	< LOQ	0.05															
Total Cannabinoids	13.66	136.6	0.03															


Water Activity and Moisture

Analyte	Result	Limit	Units	LOQ	Analyzed	Method
Water Activity	0.448	0.65	AW	0.0300	11/11/2019	Water Activity
Percent Moisture	7.87	15	%	0.10	11/11/2019	Moisture

Cannabinoids reported as dry weight (moisture corrected)

Results above the action level are highlighted in red #.

<LOQ - Results below the Limit of Quantitation - Compound not detected


Breeanna Hamilton For Brian Weigel
Lab Director

These results relate only to the sample included on this report. The report may not be reproduced except in full, without the written permission of SC Laboratories. Samples tested in accordance with Oregon Administrative Rules, TNI 2009 Standard and SC Laboratories quality assurance plan unless otherwise noted.

Sample Name: Rogue	License: AG-R1060126IHH
Tested for: Extent Solutions Co Hemp Compliance	Date Sampled: 11/06/19 16:42
Laboratory ID: 19K0058-06 Strain: Rogue	Date Accepted: 11/07/19
Matrix: Useable Marijuana	Sample Metrc ID: 1A40105000282FA000000114
Lot # NA	Batch RFID: 1A40105000282FA000000113
	Batch Size: 6810 (g)

Terpene Analysis

Date Extracted: 11/11/19

Analysis Method/SOP: Potency

Date Analyzed: 11/12/19

Analyte	Result (%)	LOQ	Analyte	Result	LOQ
alpha Pinene	0.139	0.020	beta Myrcene	0.711	0.020
alpha Phellandrene	< LOQ	0.020	3-Carene	< LOQ	0.020
alpha Terpinene	< LOQ	0.020	Limonene	0.161	0.020
Terpinolene	< LOQ	0.020	Linalool	0.029	0.020
Fenchol	0.022	0.020	Borneol	< LOQ	0.020
Terpineol	0.021	0.020	Geraniol	< LOQ	0.020
alpha Humulene	0.070	0.020	beta Caryophyllene	0.236	0.020
(-)-Caryophyllene Oxide	0.021	0.020	(-)-alpha Bisabolol	0.088	0.020
Camphene	< LOQ	0.020	beta Pinene	0.078	0.020
Ocimene	0.036	0.020	Sabinene	< LOQ	0.020
Camphor	< LOQ	0.020	Isoborneol	< LOQ	0.020
Menthol	< LOQ	0.020	alpha Cedrene	< LOQ	0.020
Nerolidol	< LOQ	0.020	(+)-Pulegone	0.029	0.020
Eucalyptol	< LOQ	0.020	p-Cymene	< LOQ	0.020
(-)-Isopulegol	< LOQ	0.020	Geranyl Acetate	< LOQ	0.020
Guaiol	0.074	0.020	Valencene	< LOQ	0.020
Phytol	0.089	0.020	Citronellol	< LOQ	0.020
gamma Terpinene	< LOQ	0.020			
			Total Terpenes	1.803 %	

<LOQ - Results below the Limit of Quantitation - Compound not detected

Terpene Analysis is not ORELAP Accredited.

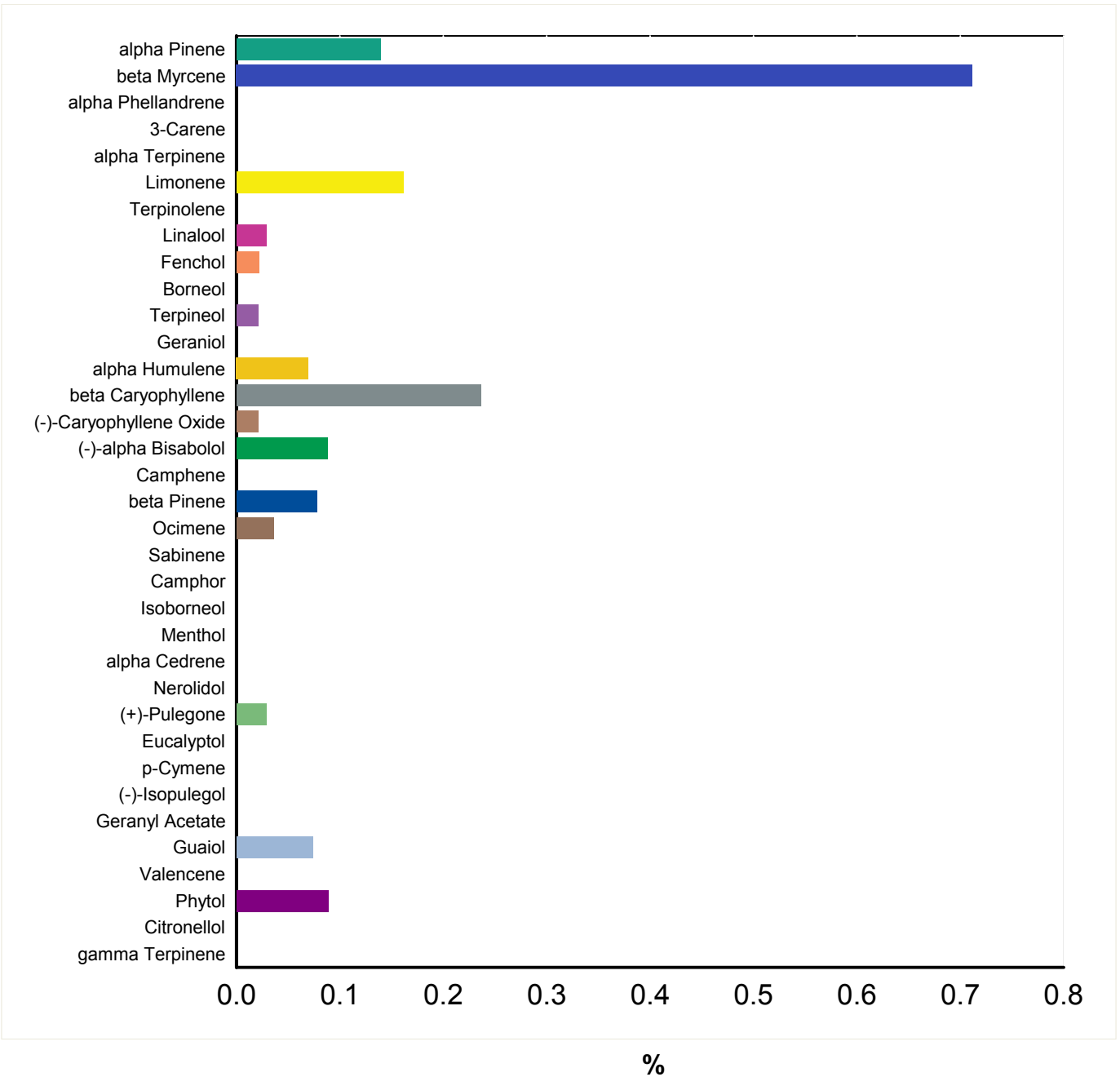


Breeanna Hamilton For Brian Weigel
Lab Director

These results relate only to the sample included on this report. The report may not be reproduced except in full, without the written permission of SC Laboratories. Samples tested in accordance with Oregon Administrative Rules, TNI 2009 Standard and SC Laboratories quality assurance plan unless otherwise noted.

Sample Name: Rogue	License: AG-R1060126IHH
Tested for: Extent Solutions Co	Date Sampled: 11/06/19 16:42
Hemp Compliance	Date Accepted: 11/07/19 18:06
Laboratory ID: 19K0058-06	Matrix: Useable Marijuana
	Client/Metr ID: 1A40105000282FA000000114

Terpene Profile



Breeanna Hamilton
 Breeanna Hamilton For Brian Weigel
 Lab Director

These results relate only to the sample included on this report. The report may not be reproduced except in full, without the written permission of SC Laboratories. Samples tested in accordance with Oregon Administrative Rules, TNI 2009 Standard and SC Laboratories quality assurance plan unless otherwise noted.

Sample Name: **Rogue** License: **AG-R1060126IHH**
 Tested for: **Extent Solutions Co** Date Sampled: **11/06/19 16:42**
Hemp Compliance Date Accepted: **11/07/19**

Laboratory ID: **19K0058-06** Strain: **Rogue** Sample Metrc ID: **1A40105000282FA000000114**
 Matrix: **Useable Marijuana** Batch RFID: **1A40105000282FA000000113**
 Lot # **NA** Batch Size: **6810 (g)**

Pesticide Analysis in ppm

Date Extracted: 11/11/19 Analysis Method/SOP: Pesticides
 Date Analyzed: 11/13/19 Results above the action levels are highlighted in red #.

Analyte	Result	Action Level	LOQ	Analyte	Result	Action Level	LOQ
Abamectin	< LOQ	0.5	0.24	Acephate	< LOQ	0.4	0.20
Acequinocyl	< LOQ	2	0.98	Acetamiprid	< LOQ	0.2	0.10
Aldicarb	< LOQ	0.4	0.20	Azoxystrobin	< LOQ	0.2	0.10
Bifenazate	< LOQ	0.2	0.10	Bifenthrin	< LOQ	0.2	0.10
Boscalid	< LOQ	0.4	0.20	Carbaryl	< LOQ	0.2	0.10
Carbofuran	< LOQ	0.2	0.10	Chlorantraniliprole	< LOQ	0.2	0.10
Chlorfenapyr	< LOQ	1	0.49	Chlorpyrifos	< LOQ	0.2	0.10
Clofentezine	< LOQ	0.2	0.10	Cyfluthrin	< LOQ	1	0.49
Cypermethrin	< LOQ	1	0.49	Daminozide	< LOQ	1	0.49
DDVP (Dichlorvos)	< LOQ	1	0.49	Diazinon	< LOQ	0.2	0.10
Dimethoate	< LOQ	0.2	0.10	Ethoprophos	< LOQ	0.2	0.10
Etofenprox	< LOQ	0.4	0.20	Etoxazole	< LOQ	0.2	0.10
Fenoxycarb	< LOQ	0.2	0.10	Fenpyroximate	< LOQ	0.4	0.20
Fipronil	< LOQ	0.4	0.20	Fonicamid	< LOQ	1	0.49
Fludioxonil	< LOQ	0.4	0.20	Hexythiazox	< LOQ	1	0.49
Imazalil	< LOQ	0.2	0.10	Imidacloprid	< LOQ	0.4	0.20
Kresoxim-methyl	< LOQ	0.4	0.20	Malathion	< LOQ	0.2	0.10
Metalaxyl	< LOQ	0.2	0.10	Methiocarb	< LOQ	0.2	0.10
Methomyl	< LOQ	0.4	0.20	Methyl parathion	< LOQ	0.2	0.10
MGK-264	< LOQ	0.2	0.10	Myclobutanil	< LOQ	0.2	0.10
Naled	< LOQ	0.5	0.24	Oxamyl	< LOQ	1	0.49
Paclobutrazol	< LOQ	0.4	0.20	Permethrins (total)	< LOQ	0.2	0.10
Phosmet	< LOQ	0.2	0.10	Piperonyl butoxide	< LOQ	2	0.49
Prallethrin	< LOQ	0.2	0.10	Propiconazole	< LOQ	0.4	0.20
Propoxur	< LOQ	0.2	0.10	Pyrethrins (total)	< LOQ	1	0.49
Pyridaben	< LOQ	0.2	0.10	Spinosad	< LOQ	0.2	0.10
Spiromesifen	< LOQ	0.2	0.10	Spirotetramat	< LOQ	0.2	0.10
Spiroxamine	< LOQ	0.4	0.20	Tebuconazole	< LOQ	0.4	0.20
Thiacloprid	< LOQ	0.2	0.10	Thiamethoxam	< LOQ	0.2	0.10
Trifloxystrobin	< LOQ	0.2	0.10				

<LOQ - Results below the Limit of Quantitation - Compound not detected


 Breeanna Hamilton For Brian Weigel
 Lab Director

These results relate only to the sample included on this report. The report may not be reproduced except in full, without the written permission of SC Laboratories. Samples tested in accordance with Oregon Administrative Rules, TNI 2009 Standard and SC Laboratories quality assurance plan unless otherwise noted.

Case Narrative

Terpenes - Phytol result was above QC criteria in the Method Blank.

Pesticides - Imidacloprid recovered above the upper acceptance limit in the Blank Spike and Matrix Spike. Abamectin and Dichlorvos recovered above the upper acceptance limit in the Matrix Spike and Matrix Spike Duplicate. Analytes were below the reporting limit in all client samples.

Acequinocyl recovered below the lower acceptance limit in the Blank Spike but within internally maintained control chart limits in the Matrix Spike and Matrix Spike Duplicate. Naled recovered below the lower acceptance limit in the Blank Spike, Matrix Spike and Matrix Spike Duplicate. No peaks were identified in the retention time windows of these analytes.

Quality Control Potency

Batch: B192111 - Potency/Terpenes

Blank(B192111-BLK1)		Extracted - 11/11/19 13:59 Analyzed - 11/11/19 21:39						
Analyte	Result	Units	Spike Level	Source Result	%REC	%REC Limits	RPD	RPD Limit
d9-THC (d9-Tetrahydrocannabinol)	< LOQ	%						
d8-THC (d8-Tetrahydrocannabinol)	< LOQ	%						
THCA (d9-Tetrahydrocannabinolic Acid)	< LOQ	%						
CBD (Cannabidiol)	< LOQ	%						
CBDA (Cannabidiolic Acid)	< LOQ	%						
CBN (Cannabinol)	< LOQ	%						
CBG (Cannabigerol)	< LOQ	%						
CBGA (Cannabigerolic Acid)	< LOQ	%						
CBDV (Cannabidivarin)	< LOQ	%						
CBDVA (Cannabidivarinic Acid)	< LOQ	%						
CBC (Cannabichromene)	< LOQ	%						
THCV (Tetrahydrocannabivarin)	< LOQ	%						

Duplicate(B192111-DUP1)		Extracted - 11/11/19 13:59 Analyzed - 11/11/19 21:47						
Analyte	Result	Units	Spike Level	Source Result	%REC	%REC Limits	RPD	RPD Limit
d9-THC (d9-Tetrahydrocannabinol)	1.92	%		1.95			1.53	20
d8-THC (d8-Tetrahydrocannabinol)	< LOQ	%		< LOQ				20
THCA (d9-Tetrahydrocannabinolic Acid)	29.69	%		29.72			0.120	20
CBD (Cannabidiol)	< LOQ	%		< LOQ				20
CBDA (Cannabidiolic Acid)	0.08	%		0.08			1.87	20
CBN (Cannabinol)	< LOQ	%		< LOQ				20
CBG (Cannabigerol)	0.16	%		0.16			1.04	20
CBGA (Cannabigerolic Acid)	0.41	%		0.42			0.304	20


 Breeanna Hamilton For Brian Weigel
 Lab Director

These results relate only to the sample included on this report. The report may not be reproduced except in full, without the written permission of SC Laboratories. Samples tested in accordance with Oregon Administrative Rules, TNI 2009 Standard and SC Laboratories quality assurance plan unless otherwise noted.

**Quality Control
 Potency (Continued)**

Batch: B192111 - Potency/Terpenes (Continued)

Duplicate(B192111-DUP1)		Extracted - 11/11/19 13:59 Analyzed - 11/11/19 21:47						
Analyte	Result	Units	Spike Level	Source Result	%REC	%REC Limits	RPD	RPD Limit
CBDV (Cannabidivarin)	< LOQ	%		< LOQ				20
CBDVA (Cannabidivarinic Acid)	0.04	%		0.03			13.2	20
CBC (Cannabichromene)	0.06	%		0.07			16.0	20
THCV (Tetrahydrocannabivarin)	0.06	%		0.06			2.22	20

LCS(B192111-BS1)		Extracted - 11/11/19 13:59 Analyzed - 11/11/19 21:31						
Analyte	Result	Units	Spike Level	Source Result	%REC	%REC Limits	RPD	RPD Limit
d9-THC (d9-Tetrahydrocannabinol)	0.04	%	0.0400		102	80-120		
CBD (Cannabidiol)	0.04	%	0.0400		104	80-120		
CBDA (Cannabidiolic Acid)	0.04	%	0.0400		94.5	80-120		
CBN (Cannabinol)	0.04	%	0.0400		94.3	80-120		


 Breeanna Hamilton For Brian Weigel
 Lab Director

These results relate only to the sample included on this report. The report may not be reproduced except in full, without the written permission of SC Laboratories. Samples tested in accordance with Oregon Administrative Rules, TNI 2009 Standard and SC Laboratories quality assurance plan unless otherwise noted.

Quality Control Pesticide Analysis

Batch: B192113 - Pesticide Prep

Blank(B192113-BLK1)		Extracted - 11/11/19 14:14 Analyzed - 11/13/19 14:38						
Analyte	Result	Units	Spike Level	Source Result	%REC	%REC Limits	RPD	RPD Limit
Abamectin	< LOQ	ppm						
Acephate	< LOQ	ppm						
Acequinocyl	< LOQ	ppm						
Acetamiprid	< LOQ	ppm						
Aldicarb	< LOQ	ppm						
Azoxystrobin	< LOQ	ppm						
Bifenazate	< LOQ	ppm						
Bifenthrin	< LOQ	ppm						
Boscalid	< LOQ	ppm						
Carbaryl	< LOQ	ppm						
Carbofuran	< LOQ	ppm						
Chlorantraniliprole	< LOQ	ppm						
Chlorfenapyr	< LOQ	ppm						
Chlorpyrifos	< LOQ	ppm						
Clofentezine	< LOQ	ppm						
Cyfluthrin	< LOQ	ppm						
Cypermethrin	< LOQ	ppm						
Daminozide	< LOQ	ppm						
DDVP (Dichlorvos)	< LOQ	ppm						
Diazinon	< LOQ	ppm						
Dimethoate	< LOQ	ppm						
Ethoprophos	< LOQ	ppm						
Etofenprox	< LOQ	ppm						
Etoxazole	< LOQ	ppm						
Fenoxycarb	< LOQ	ppm						
Fenpyroximate	< LOQ	ppm						
Fipronil	< LOQ	ppm						
Fonicamid	< LOQ	ppm						
Fludioxonil	< LOQ	ppm						
Hexythiazox	< LOQ	ppm						
Imazalil	< LOQ	ppm						
Imidacloprid	< LOQ	ppm						
Kresoxim-methyl	< LOQ	ppm						
Malathion	< LOQ	ppm						
Metalaxyl	< LOQ	ppm						


Breeanna Hamilton For Brian Weigel
Lab Director

These results relate only to the sample included on this report. The report may not be reproduced except in full, without the written permission of SC Laboratories. Samples tested in accordance with Oregon Administrative Rules, TNI 2009 Standard and SC Laboratories quality assurance plan unless otherwise noted.

Quality Control

Pesticide Analysis (Continued)

Batch: B192113 - Pesticide Prep (Continued)

Blank(B192113-BLK1)		Extracted - 11/11/19 14:14 Analyzed - 11/13/19 14:38						
Analyte	Result	Units	Spike Level	Source Result	%REC	%REC Limits	RPD	RPD Limit
Methiocarb	< LOQ	ppm						
Methomyl	< LOQ	ppm						
Methyl parathion	< LOQ	ppm						
MGK-264	< LOQ	ppm						
Myclobutanil	< LOQ	ppm						
Naled	< LOQ	ppm						
Oxamyl	< LOQ	ppm						
Paclbutrazol	< LOQ	ppm						
Permethrins (total)	< LOQ	ppm						
Phosmet	< LOQ	ppm						
Piperonyl butoxide	< LOQ	ppm						
Prallethrin	< LOQ	ppm						
Propiconazole	< LOQ	ppm						
Propoxur	< LOQ	ppm						
Pyrethrins (total)	< LOQ	ppm						
Pyridaben	< LOQ	ppm						
Spinosad	< LOQ	ppm						
Spiromesifen	< LOQ	ppm						
Spirotetramat	< LOQ	ppm						
Spiroxamine	< LOQ	ppm						
Tebuconazole	< LOQ	ppm						
Thiacloprid	< LOQ	ppm						
Thiamethoxam	< LOQ	ppm						
Trifloxystrobin	< LOQ	ppm						

LCS(B192113-BS1)		Extracted - 11/11/19 14:14 Analyzed - 11/13/19 14:54						
Analyte	Result	Units	Spike Level	Source Result	%REC	%REC Limits	RPD	RPD Limit
Abamectin	1.23	ppm	0.980		125	29-150		
Acephate	0.90	ppm	1.00		90.2	48-133		
Acequinocyl	0.08	ppm	1.00		7.99	48-150		
Acetamiprid	0.98	ppm	1.00		97.6	45-150		
Aldicarb	0.90	ppm	1.00		89.6	58-134		
Azoxystrobin	0.95	ppm	1.00		95.5	25-150		
Bifenazate	0.99	ppm	1.00		98.6	46-141		
Bifenthrin	0.90	ppm	1.00		90.2	55-150		


Breeanna Hamilton For Brian Weigel
Lab Director

These results relate only to the sample included on this report. The report may not be reproduced except in full, without the written permission of SC Laboratories. Samples tested in accordance with Oregon Administrative Rules, TNI 2009 Standard and SC Laboratories quality assurance plan unless otherwise noted.

Quality Control

Pesticide Analysis (Continued)

Batch: B192113 - Pesticide Prep (Continued)

LCS(B192113-BS1)		Extracted - 11/11/19 14:14 Analyzed - 11/13/19 14:54						
Analyte	Result	Units	Spike Level	Source Result	%REC	%REC Limits	RPD	RPD Limit
Boscalid	0.88	ppm	1.00		88.2	34-141		
Carbaryl	0.91	ppm	1.00		91.3	67-125		
Carbofuran	1.00	ppm	1.00		99.7	71-128		
Chlorantraniliprole	0.94	ppm	1.00		94.0	43-138		
Chlorfenapyr	0.85	ppm	1.00		85.2	45-150		
Chlorpyrifos	0.93	ppm	1.00		92.6	36-150		
Clofentezine	0.84	ppm	1.00		84.2	59-135		
Cyfluthrin	0.94	ppm	1.00		94.4	33-150		
Cypermethrin	1.02	ppm	1.00		102	47-148		
Daminozide	1.14	ppm	1.00		114	18-116		
DDVP (Dichlorvos)	1.50	ppm	1.00		150	65-150		
Diazinon	0.90	ppm	1.00		90.4	60-130		
Dimethoate	1.00	ppm	1.00		99.7	65-131		
Ethoprophos	0.90	ppm	1.00		90.2	52-150		
Etofenprox	0.81	ppm	1.00		80.8	60-139		
Etoxazole	0.87	ppm	1.00		86.5	59-122		
Fenoxycarb	0.93	ppm	1.00		93.2	39-146		
Fenpyroximate	1.01	ppm	1.00		101	44-147		
Fipronil	0.89	ppm	1.00		89.0	40-143		
Flonicamid	0.96	ppm	1.00		96.1	50-142		
Fludioxonil	0.83	ppm	1.00		83.0	49-150		
Hexythiazox	0.91	ppm	1.00		91.0	41-142		
Imazalil	0.95	ppm	1.00		94.5	61-127		
Imidacloprid	1.99	ppm	1.00		199	36-150		
Kresoxim-methyl	0.88	ppm	1.00		87.6	53-131		
Malathion	0.94	ppm	1.00		94.5	55-134		
Metalaxyl	0.92	ppm	1.00		91.8	64-127		
Methiocarb	0.86	ppm	1.00		86.4	53-144		
Methomyl	0.98	ppm	1.00		97.6	47-141		
Methyl parathion	0.89	ppm	1.00		89.4	48-142		
MGK-264	0.59	ppm	0.630		93.3	38-150		
Myclobutanil	0.89	ppm	1.00		89.2	45-146		
Naled	0.01	ppm	1.00		1.05	28-113		
Oxamyl	0.98	ppm	1.00		97.5	48-133		
Paclobutrazol	0.88	ppm	1.00		88.4	37-150		


Breeanna Hamilton For Brian Weigel
Lab Director

These results relate only to the sample included on this report. The report may not be reproduced except in full, without the written permission of SC Laboratories. Samples tested in accordance with Oregon Administrative Rules, TNI 2009 Standard and SC Laboratories quality assurance plan unless otherwise noted.

Quality Control

Pesticide Analysis (Continued)

Batch: B192113 - Pesticide Prep (Continued)

LCS(B192113-BS1)		Extracted - 11/11/19 14:14 Analyzed - 11/13/19 14:54						
Analyte	Result	Units	Spike Level	Source Result	%REC	%REC Limits	RPD	RPD Limit
Permethrins (total)	1.03	ppm	1.00		103	46-150		
Phosmet	0.68	ppm	1.00		68.4	48-137		
Piperonyl butoxide	0.91	ppm	1.00		90.8	43-142		
Prallethrin	0.93	ppm	1.00		93.1	48-144		
Propiconazole	0.86	ppm	1.00		85.9	52-136		
Propoxur	0.99	ppm	1.00		99.2	61-131		
Pyrethrins (total)	0.64	ppm	0.630		101	24-150		
Pyridaben	0.87	ppm	1.00		86.6	40-150		
Spinosad	0.77	ppm	0.820		93.6	42-148		
Spiromesifen	0.89	ppm	1.00		89.0	38-150		
Spirotetramat	0.86	ppm	1.00		86.5	37-132		
Spiroxamine	1.05	ppm	1.00		105	49-136		
Tebuconazole	0.91	ppm	1.00		90.8	46-142		
Thiacloprid	0.94	ppm	1.00		94.1	48-150		
Thiamethoxam	1.18	ppm	1.00		118	46-138		
Trifloxystrobin	0.89	ppm	1.00		89.4	44-144		

Matrix Spike(B192113-MS1)		Extracted - 11/11/19 14:14 Analyzed - 11/13/19 15:10						
Analyte	Result	Units	Spike Level	Source Result	%REC	%REC Limits	RPD	RPD Limit
Abamectin	2.39	ppm	0.966	< LOQ	248	15-150		
Acephate	1.06	ppm	0.985	< LOQ	108	45-130		
Acequinocyl	0.68	ppm	0.985	< LOQ	69.2	31-146		
Acetamiprid	1.00	ppm	0.985	< LOQ	101	39-150		
Aldicarb	0.94	ppm	0.985	< LOQ	95.2	47-143		
Azoxystrobin	1.04	ppm	0.985	< LOQ	105	21-150		
Bifenazate	1.11	ppm	0.985	< LOQ	113	31-150		
Bifenthrin	0.56	ppm	0.985	< LOQ	57.0	23-132		
Boscalid	1.12	ppm	0.985	< LOQ	113	41-141		
Carbaryl	0.98	ppm	0.985	< LOQ	99.3	60-125		
Carbofuran	1.05	ppm	0.985	< LOQ	106	57-136		
Chlorantraniliprole	1.32	ppm	0.985	< LOQ	134	32-145		
Chlorfenapyr	1.01	ppm	0.985	< LOQ	102	29-150		
Chlorpyrifos	0.92	ppm	0.985	< LOQ	93.0	29-146		
Clofentezine	0.96	ppm	0.985	< LOQ	97.4	48-128		
Cyfluthrin	1.24	ppm	0.985	< LOQ	126	16-150		


 Breeanna Hamilton For Brian Weigel
 Lab Director

These results relate only to the sample included on this report. The report may not be reproduced except in full, without the written permission of SC Laboratories. Samples tested in accordance with Oregon Administrative Rules, TNI 2009 Standard and SC Laboratories quality assurance plan unless otherwise noted.

Quality Control

Pesticide Analysis (Continued)

Batch: B192113 - Pesticide Prep (Continued)

Matrix Spike(B192113-MS1)			Extracted - 11/11/19 14:14 Analyzed - 11/13/19 15:10					
Analyte	Result	Units	Spike Level	Source Result	%REC	%REC Limits	RPD	RPD Limit
Cypermethrin	1.17	ppm	0.985	< LOQ	119	22-150		
Daminozide	1.35	ppm	0.985	< LOQ	137	34-150		
DDVP (Dichlorvos)	1.34	ppm	0.985	< LOQ	136	55-133		
Diazinon	1.04	ppm	0.985	< LOQ	106	54-126		
Dimethoate	1.07	ppm	0.985	< LOQ	109	60-129		
Ethoprophos	0.94	ppm	0.985	< LOQ	95.2	40-150		
Etofenprox	0.79	ppm	0.985	< LOQ	80.2	25-135		
Etoxazole	0.90	ppm	0.985	< LOQ	91.3	26-149		
Fenoxycarb	1.05	ppm	0.985	< LOQ	107	37-145		
Fenpyroximate	1.28	ppm	0.985	< LOQ	130	27-150		
Fipronil	1.13	ppm	0.985	< LOQ	115	27-150		
Flonicamid	1.00	ppm	0.985	< LOQ	101	46-139		
Fludioxonil	0.97	ppm	0.985	< LOQ	98.9	31-150		
Hexythiazox	0.97	ppm	0.985	< LOQ	98.1	32-150		
Imazalil	1.04	ppm	0.985	< LOQ	106	44-142		
Imidacloprid	1.50	ppm	0.985	< LOQ	153	23-150		
Kresoxim-methyl	1.08	ppm	0.985	< LOQ	110	49-130		
Malathion	1.03	ppm	0.985	< LOQ	105	25-150		
Metalaxyl	1.00	ppm	0.985	< LOQ	101	49-141		
Methiocarb	0.91	ppm	0.985	< LOQ	92.7	44-146		
Methomyl	1.05	ppm	0.985	< LOQ	107	44-136		
Methyl parathion	0.96	ppm	0.985	< LOQ	97.5	15-150		
MGK-264	0.57	ppm	0.621	< LOQ	91.8	22-150		
Myclobutanil	0.99	ppm	0.985	< LOQ	100	34-150		
Naled	0.25	ppm	0.985	< LOQ	24.9	38-142		
Oxamyl	1.06	ppm	0.985	< LOQ	107	40-132		
Paclobutrazol	1.05	ppm	0.985	< LOQ	106	29-147		
Permethrins (total)	0.90	ppm	0.985	< LOQ	91.3	27-104		
Phosmet	1.02	ppm	0.985	< LOQ	104	35-150		
Piperonyl butoxide	0.81	ppm	0.985	< LOQ	82.1	34-143		
Prallethrin	0.99	ppm	0.985	< LOQ	101	33-150		
Propiconazole	1.14	ppm	0.985	< LOQ	115	46-138		
Propoxur	0.99	ppm	0.985	< LOQ	101	50-138		
Pyrethrins (total)	0.79	ppm	0.621	< LOQ	127	21-150		
Pyridaben	0.57	ppm	0.985	< LOQ	57.4	39-150		


Breeanna Hamilton For Brian Weigel
Lab Director

These results relate only to the sample included on this report. The report may not be reproduced except in full, without the written permission of SC Laboratories. Samples tested in accordance with Oregon Administrative Rules, TNI 2009 Standard and SC Laboratories quality assurance plan unless otherwise noted.

Quality Control

Pesticide Analysis (Continued)

Batch: B192113 - Pesticide Prep (Continued)

Matrix Spike(B192113-MS1)			Extracted - 11/11/19 14:14 Analyzed - 11/13/19 15:10					
Analyte	Result	Units	Spike Level	Source Result	%REC	%REC Limits	RPD	RPD Limit
Spinosad	0.87	ppm	0.808	< LOQ	108	31-150		
Spiromesifen	0.93	ppm	0.985	< LOQ	94.7	27-141		
Spirotetramat	1.28	ppm	0.985	< LOQ	130	31-141		
Spiroxamine	1.17	ppm	0.985	< LOQ	118	57-139		
Tebuconazole	1.10	ppm	0.985	< LOQ	112	32-140		
Thiacloprid	0.83	ppm	0.985	< LOQ	84.5	45-150		
Thiamethoxam	1.19	ppm	0.985	< LOQ	121	40-141		
Trifloxystrobin	1.06	ppm	0.985	< LOQ	108	30-137		

Matrix Spike Dup(B192113-MSD1)			Extracted - 11/11/19 14:14 Analyzed - 11/13/19					
Analyte	Result	Units	Spike Level	Source Result	%REC	%REC Limits	RPD	RPD Limit
Abamectin	1.91	ppm	0.956	< LOQ	200	15-150	21.3	40
Acephate	1.05	ppm	0.976	< LOQ	107	45-130	0.510	26
Acequinocyl	0.57	ppm	0.976	< LOQ	58.4	31-146	16.9	50
Acetamiprid	0.96	ppm	0.976	< LOQ	98.7	39-150	2.67	21
Aldicarb	0.91	ppm	0.976	< LOQ	93.5	47-143	1.80	30
Azoxystrobin	1.04	ppm	0.976	< LOQ	106	21-150	0.879	21
Bifenazate	1.11	ppm	0.976	< LOQ	113	31-150	0.371	20
Bifenthrin	0.56	ppm	0.976	< LOQ	57.5	23-132	0.920	30
Boscalid	1.11	ppm	0.976	< LOQ	114	41-141	0.281	20
Carbaryl	0.97	ppm	0.976	< LOQ	99.7	60-125	0.353	20
Carbofuran	1.01	ppm	0.976	< LOQ	103	57-136	2.64	24
Chlorantraniliprole	1.37	ppm	0.976	< LOQ	140	32-145	5.05	20
Chlorfenapyr	1.17	ppm	0.976	< LOQ	120	29-150	15.8	50
Chlorpyrifos	0.96	ppm	0.976	< LOQ	98.1	29-146	5.38	24
Clofentezine	0.94	ppm	0.976	< LOQ	96.7	48-128	0.722	20
Cyfluthrin	1.42	ppm	0.976	< LOQ	145	16-150	14.0	50
Cypermethrin	1.14	ppm	0.976	< LOQ	117	22-150	2.14	30
Daminozide	1.37	ppm	0.976	< LOQ	140	34-150	2.03	30
DDVP (Dichlorvos)	1.32	ppm	0.976	< LOQ	135	55-133	0.412	30
Diazinon	1.03	ppm	0.976	< LOQ	106	54-126	0.399	20
Dimethoate	1.04	ppm	0.976	< LOQ	107	60-129	1.77	20
Ethoprophos	0.93	ppm	0.976	< LOQ	95.1	40-150	0.0650	29
Etofenprox	0.80	ppm	0.976	< LOQ	82.5	25-135	2.84	24
Etoxazole	0.92	ppm	0.976	< LOQ	94.6	26-149	3.58	30


Breeanna Hamilton For Brian Weigel
Lab Director

These results relate only to the sample included on this report. The report may not be reproduced except in full, without the written permission of SC Laboratories. Samples tested in accordance with Oregon Administrative Rules, TNI 2009 Standard and SC Laboratories quality assurance plan unless otherwise noted.

Quality Control

Pesticide Analysis (Continued)

Batch: B192113 - Pesticide Prep (Continued)

Matrix Spike Dup(B192113-MSD1)			Extracted - 11/11/19 14:14 Analyzed - 11/13/19					
Analyte	Result	Units	Spike Level	Source Result	%REC	%REC Limits	RPD	RPD Limit
Fenoxycarb	1.03	ppm	0.976	< LOQ	106	37-145	1.01	23
Fenpyroximate	1.27	ppm	0.976	< LOQ	130	27-150	0.161	20
Fipronil	1.12	ppm	0.976	< LOQ	115	27-150	0.592	28
Flonicamid	0.98	ppm	0.976	< LOQ	100	46-139	1.12	29
Fludioxonil	0.96	ppm	0.976	< LOQ	98.2	31-150	0.633	30
Hexythiazox	0.98	ppm	0.976	< LOQ	101	32-150	2.55	28
Imazalil	1.05	ppm	0.976	< LOQ	107	44-142	1.50	25
Imidacloprid	1.45	ppm	0.976	< LOQ	148	23-150	2.85	30
Kresoxim-methyl	1.06	ppm	0.976	< LOQ	108	49-130	1.53	20
Malathion	1.04	ppm	0.976	< LOQ	107	25-150	2.05	21
Metalaxyl	0.98	ppm	0.976	< LOQ	101	49-141	0.802	20
Methiocarb	0.91	ppm	0.976	< LOQ	93.1	44-146	0.422	20
Methomyl	0.99	ppm	0.976	< LOQ	101	44-136	4.90	30
Methyl parathion	1.18	ppm	0.976	< LOQ	121	15-150	21.6	50
MGK-264	0.59	ppm	0.615	< LOQ	95.7	22-150	4.14	24
Myclobutanil	1.00	ppm	0.976	< LOQ	102	34-150	2.26	23
Naled	0.23	ppm	0.976	< LOQ	23.3	38-142	6.72	25
Oxamyl	1.04	ppm	0.976	< LOQ	106	40-132	1.15	30
Paclobutrazol	1.05	ppm	0.976	< LOQ	108	29-147	1.44	20
Permethrins (total)	0.90	ppm	0.976	< LOQ	92.2	27-104	0.951	30
Phosmet	1.11	ppm	0.976	< LOQ	114	35-150	9.83	20
Piperonyl butoxide	0.82	ppm	0.976	< LOQ	84.4	34-143	2.78	21
Prallethrin	1.03	ppm	0.976	< LOQ	105	33-150	4.55	25
Propiconazole	1.11	ppm	0.976	< LOQ	114	46-138	1.43	20
Propoxur	0.97	ppm	0.976	< LOQ	99.6	50-138	1.26	28
Pyrethrins (total)	0.79	ppm	0.615	< LOQ	129	21-150	1.69	28
Pyridaben	0.57	ppm	0.976	< LOQ	58.5	39-150	1.95	23
Spinosad	0.85	ppm	0.800	< LOQ	106	31-150	2.01	30
Spiromesifen	0.93	ppm	0.976	< LOQ	94.9	27-141	0.127	30
Spirotetramat	1.28	ppm	0.976	< LOQ	131	31-141	0.683	25
Spiroxamine	1.13	ppm	0.976	< LOQ	116	57-139	2.35	20
Tebuconazole	1.10	ppm	0.976	< LOQ	112	32-140	0.278	20
Thiacloprid	0.80	ppm	0.976	< LOQ	81.9	45-150	3.07	21
Thiamethoxam	1.18	ppm	0.976	< LOQ	121	40-141	0.0170	30
Trifloxystrobin	1.04	ppm	0.976	< LOQ	106	30-137	1.02	29


Breeanna Hamilton For Brian Weigel
Lab Director

These results relate only to the sample included on this report. The report may not be reproduced except in full, without the written permission of SC Laboratories. Samples tested in accordance with Oregon Administrative Rules, TNI 2009 Standard and SC Laboratories quality assurance plan unless otherwise noted.

Quality Control Terpene Analysis

Batch: B192112 - Potency/Terpenes

Blank(B192112-BLK1)			Extracted - 11/11/19 13:59 Analyzed - 11/11/19 20:01					
Analyte	Result	Units	Spike Level	Source Result	%REC	%REC Limits	RPD	RPD Limit
alpha Pinene	< LOQ	%						
beta Myrcene	< LOQ	%						
alpha Phellandrene	< LOQ	%						
3-Carene	< LOQ	%						
alpha Terpinene	< LOQ	%						
Limonene	< LOQ	%						
Terpinolene	< LOQ	%						
Linalool	< LOQ	%						
Fenchol	< LOQ	%						
Borneol	< LOQ	%						
Terpineol	< LOQ	%						
Geraniol	< LOQ	%						
alpha Humulene	< LOQ	%						
beta Caryophyllene	< LOQ	%						
(-)-Caryophyllene Oxide	< LOQ	%						
(-)-alpha Bisabolol	< LOQ	%						
Camphene	< LOQ	%						
beta Pinene	< LOQ	%						
Ocimene	< LOQ	%						
Sabinene	< LOQ	%						
Camphor	< LOQ	%						
Isoborneol	< LOQ	%						
Menthol	< LOQ	%						
alpha Cedrene	< LOQ	%						
Nerolidol	< LOQ	%						
(+)-Pulegone	< LOQ	%						
Eucalyptol	< LOQ	%						
p-Cymene	< LOQ	%						
(-)-Isopulegol	< LOQ	%						
Geranyl Acetate	< LOQ	%						
Guaiol	< LOQ	%						
Valencene	< LOQ	%						
Phytol	0.256	%						
Citronellol	< LOQ	%						
gamma Terpinene	< LOQ	%						


Breeanna Hamilton For Brian Weigel
Lab Director

These results relate only to the sample included on this report. The report may not be reproduced except in full, without the written permission of SC Laboratories. Samples tested in accordance with Oregon Administrative Rules, TNI 2009 Standard and SC Laboratories quality assurance plan unless otherwise noted.

Quality Control

Terpene Analysis (Continued)

Batch: B192112 - Potency/Terpenes (Continued)

Duplicate(B192112-DUP1)			Extracted - 11/11/19 13:59 Analyzed - 11/11/19 20:01					
Analyte	Result	Units	Spike Level	Source Result	%REC	%REC Limits	RPD	RPD Limit
alpha Ocimene	< LOQ	%		< LOQ				20
alpha Terpineol	0.042	%		0.043			0.905	20
beta Ocimene	< LOQ	%		< LOQ				20
beta Terpineol	< LOQ	%		< LOQ				20
cis-Nerolidol	< LOQ	%		< LOQ				20
Phytol 1	< LOQ	%		< LOQ				20
Phytol 2	0.067	%		0.068			1.35	20
trans-Nerolidol	0.036	%		0.037			2.74	20
alpha Pinene	0.322	%		0.317			1.50	20
beta Myrcene	1.117	%		1.096			1.90	20
alpha Phellandrene	< LOQ	%		< LOQ				20
3-Carene	< LOQ	%		< LOQ				20
alpha Terpinene	< LOQ	%		< LOQ				20
Limonene	0.260	%		0.256			1.51	20
Terpinolene	< LOQ	%		< LOQ				20
Linalool	0.194	%		0.191			1.54	20
Fenchol	0.041	%		0.040			3.67	20
Borneol	0.020	%		0.020			2.27	20
Terpineol	0.042	%		0.043			0.905	20
Geraniol	< LOQ	%		0.041				20
alpha Humulene	0.086	%		0.085			1.29	20
beta Caryophyllene	0.277	%		0.271			2.11	20
(-)-Caryophyllene Oxide	0.025	%		0.023			8.80	20
(-)-alpha Bisabolol	< LOQ	%		< LOQ				20
Camphene	< LOQ	%		< LOQ				20
beta Pinene	0.181	%		0.178			1.68	20
Ocimene	< LOQ	%		< LOQ				20
Sabinene	< LOQ	%		< LOQ				20
Camphor	< LOQ	%		< LOQ				20
Isoborneol	< LOQ	%		< LOQ				20
Menthol	< LOQ	%		< LOQ				20
alpha Cedrene	< LOQ	%		< LOQ				20
Nerolidol	0.036	%		0.037			2.74	20
(+)-Pulegone	0.023	%		0.025			12.2	20
Eucalyptol	< LOQ	%		< LOQ				20


Breeanna Hamilton For Brian Weigel
Lab Director

These results relate only to the sample included on this report. The report may not be reproduced except in full, without the written permission of SC Laboratories. Samples tested in accordance with Oregon Administrative Rules, TNI 2009 Standard and SC Laboratories quality assurance plan unless otherwise noted.

Quality Control

Terpene Analysis (Continued)

Batch: B192112 - Potency/Terpenes (Continued)

Duplicate(B192112-DUP1)			Extracted - 11/11/19 13:59 Analyzed - 11/11/19 20:01					
Analyte	Result	Units	Spike Level	Source Result	%REC	%REC Limits	RPD	RPD Limit
p-Cymene	< LOQ	%		< LOQ				20
(-)-Isopulegol	< LOQ	%		< LOQ				20
Geranyl Acetate	< LOQ	%		< LOQ				20
Guaiol	0.029	%		0.025			15.2	20
Valencene	< LOQ	%		< LOQ				20
Phytol	0.067	%		0.068			1.35	20
Citronellol	< LOQ	%		< LOQ				20
gamma Terpinene	< LOQ	%		< LOQ				20

Batch: B192114 - Gravimetric

Duplicate(B192114-DUP1)			Extracted - 11/11/19 10:00 Analyzed - 11/11/19 10:00					
Analyte	Result	Units	Spike Level	Source Result	%REC	%REC Limits	RPD	RPD Limit
Percent Moisture	8.00	%		7.67			4.12	20

Batch: B192115 - Water Activity

Duplicate(B192115-DUP1)			Extracted - 11/11/19 10:10 Analyzed - 11/11/19 10:10					
Analyte	Result	Units	Spike Level	Source Result	%REC	%REC Limits	RPD	RPD Limit
Water Activity	0.411	AW		0.412			0.389	20


Breeanna Hamilton For Brian Weigel
Lab Director

These results relate only to the sample included on this report. The report may not be reproduced except in full, without the written permission of SC Laboratories. Samples tested in accordance with Oregon Administrative Rules, TNI 2009 Standard and SC Laboratories quality assurance plan unless otherwise noted.

Client: Extent Solutions Client License: 330-1060126IHH Date Sampled: 11/6/2019 Thermometer ID: T005
 Address Where Sampled: 253 Barnett Medford Requestor: Lindsey Event ID: 19JES06 Balance ID: BAL_01
 Sampling SOP & Rev. #: SC-OR-SAMP-004 rev. 1.01 Sampler: Joel Transporter: Joel/ Scott Hygrometer ID: Hygrometer ID 03

Sampler Signature

Lab ORELAP ID: 4133
 Lab OLCID ID: 1004748743D

Weight used (g)	Weight Set ID	Acceptance Criteria	Initial Measured	Initial P/F	Final Measured	Final P/F
0.5	weight Set ID 01	±2.5%	0.5	P	0.5	P
200		±2.5%	199.93		199.94	



Container Type	METRC Harvest/Processing Lot ID #:				Product Type	Client Sample Name	Product Date	Batch Size (g)
Tote					Usable Marijuana	Elektra	10/15/2019	6810
METRC Batch ID	Product Temp (°C)	Humidity (%)	# of Containers	Sampling Media	# Zones	# of Inc.	1° Sample Size (g)	Sample Name
1A40105000282FA000000115	23.1	51.6	1	Mylar	4	10	3.5	Elektra Primary
Lab Sample ID	Container ID		Increment Zone	Sampling Media Wt. (g)	Wt. Inc+Media (g)	Increment Weight (g)	Sample METRC ID#	
19JES06-01	Elektra-1		A1	0	3.5	3.5	1A40105000282FA000000116	
19JES06-01	Elektra-1		A1	3.5	7	3.5	1A40105000282FA000000116	
19JES06-01	Elektra-1		A2	7	10.5	3.5	1A40105000282FA000000116	
19JES06-01	Elektra-1		A2	10.5	14	3.5	1A40105000282FA000000116	
19JES06-01	Elektra-1		A3	14	17.5	3.5	1A40105000282FA000000116	
19JES06-01	Elektra-1		A3	17.5	21	3.5	1A40105000282FA000000116	
19JES06-01	Elektra-1		A3	21	24.5	3.5	1A40105000282FA000000116	
19JES06-01	Elektra-1		A4	24.5	28	3.5	1A40105000282FA000000116	
19JES06-01	Elektra-1		A4	28	31.5	3.5	1A40105000282FA000000116	
19JES06-01	Elektra-1		A4	31.5	35.31	3.81	1A40105000282FA000000116	
Totals:		Minimum Sample Size = 34.2g (Usable Marijuana Only)			10	Total Sample Mass = 35.31		
Observations and Abnormalities:		Batch #	Equipment	Cont. Types/Sizes	Uniform	Plant Colors	Shape and Size	Sampling Plan ID & Rev. Date

Container Type	METRC Harvest/Processing Lot ID #:				Product Type	Client Sample Name	Product Date	Batch Size (g)
Tote					Usable Marijuana	Suver Haze	10/15/2019	6810
METRC Batch ID	Product Temp (°C)	Humidity (%)	# of Containers	Sampling Media	# Zones	# of Inc.	1° Sample Size (g)	Sample Name
1A40105000282FA000000019	23.1	51.6	1	Mylar	4	10	3.5	Suver Haze Primary
Lab Sample ID	Container ID		Increment Zone	Sampling Media Wt. (g)	Wt. Inc+Media (g)	Increment Weight (g)	Sample METRC ID#	
19JES06-02	Suver Haze-1		A1	0	3.5	3.5	1A40105000282FA000000123	
19JES06-02	Suver Haze-1		A1	3.5	7	3.5	1A40105000282FA000000123	
19JES06-02	Suver Haze-1		A1	7	10.5	3.5	1A40105000282FA000000123	
19JES06-02	Suver Haze-1		A1	10.5	14	3.5	1A40105000282FA000000123	
19JES06-02	Suver Haze-1		A3	14	17.5	3.5	1A40105000282FA000000123	
19JES06-02	Suver Haze-1		A3	17.5	21	3.5	1A40105000282FA000000123	
19JES06-02	Suver Haze-1		A3	21	24.5	3.5	1A40105000282FA000000123	
19JES06-02	Suver Haze-1		A3	24.5	28	3.5	1A40105000282FA000000123	

1A40105000282FA000000117	23.1	51.6	1	Mylar	4	10	3.5	Lifter Primary
Lab Sample ID	Container ID		Increment Zone	Sampling Media Wt. (g)	Wt. Inc+Media (g)	Increment Weight (g)	Sample METRC ID#	
19JES06-04	Lifter-1		A1	0	3.5	3.5	1A40105000282FA000000118	
19JES06-04	Lifter-1		A1	3.5	7	3.5	1A40105000282FA000000118	
19JES06-04	Lifter-1		A1	7	10.5	3.5	1A40105000282FA000000118	
19JES06-04	Lifter-1		A2	10.5	14	3.5	1A40105000282FA000000118	
19JES06-04	Lifter-1		A2	14	17.5	3.5	1A40105000282FA000000118	
19JES06-04	Lifter-1		A3	17.5	21	3.5	1A40105000282FA000000118	
19JES06-04	Lifter-1		A3	21	24.5	3.5	1A40105000282FA000000118	
19JES06-04	Lifter-1		A3	24.5	28	3.5	1A40105000282FA000000118	
19JES06-04	Lifter-1		A4	28	31.5	3.5	1A40105000282FA000000118	
19JES06-04	Lifter-1		A4	31.5	35.67	4.17	1A40105000282FA000000118	
Totals:		Minimum Sample Size = 34.2g (Usable Marijuana Only)			10	Total Sample Mass = 35.67		
Observations and Abnormalities:		Batch #	Equipment	Cont. Types/Sizes	Uniform	Plant Colors	Shape and Size	Sampling Plan ID & Rev. Date

Container Type	METRC Harvest/Processing Lot ID #:				Product Type	Client Sample Name	Product Date	Batch Size (g)
Tote					Usable Marijuana	Hawaiian Haze	10/15/2019	6810
METRC Batch ID	Product Temp (°C)	Humidity (%)	# of Containers	Sampling Media	# Zones	# of Inc.	1" Sample Size (g)	Sample Name
1A40105000282FA000000119	23.1	51.6	1	Mylar	4	10	3.5	Hawaiian Haze Primary
Lab Sample ID	Container ID		Increment Zone	Sampling Media Wt. (g)	Wt. Inc+Media (g)	Increment Weight (g)	Sample METRC ID#	
19JES06-05	Hawaiian Haze-1		A2	0	3.5	3.5	1A40105000282FA000000120	
19JES06-05	Hawaiian Haze-1		A2	3.5	7	3.5	1A40105000282FA000000120	
19JES06-05	Hawaiian Haze-1		A2	7	10.5	3.5	1A40105000282FA000000120	
19JES06-05	Hawaiian Haze-1		A2	10.5	14	3.5	1A40105000282FA000000120	
19JES06-05	Hawaiian Haze-1		A3	14	17.5	3.5	1A40105000282FA000000120	
19JES06-05	Hawaiian Haze-1		A4	17.5	21	3.5	1A40105000282FA000000120	
19JES06-05	Hawaiian Haze-1		A4	21	24.5	3.5	1A40105000282FA000000120	
19JES06-05	Hawaiian Haze-1		A4	24.5	28	3.5	1A40105000282FA000000120	
19JES06-05	Hawaiian Haze-1		A4	28	31.5	3.5	1A40105000282FA000000120	
19JES06-05	Hawaiian Haze-1		A4	31.5	35.44	3.94	1A40105000282FA000000120	
Totals:		Minimum Sample Size = 34.2g (Usable Marijuana Only)			10	Total Sample Mass = 35.44		
		Batch #	Equipment	Cont. Types/Sizes	Uniform	Plant Colors	Shape and Size	Sampling Plan ID & Rev. Date

Observations and Abnormalities:							
---------------------------------	--	--	--	--	--	--	--

Container Type	METRC Harvest/Processing Lot ID #:				Product Type	Client Sample Name	Product Date	Batch Size (g)
Tote					Usable Marijuana	Rogue	10/15/2019	6810
METRC Batch ID	Product Temp (°C)	Humidity (%)	# of Containers	Sampling Media	# Zones	# of Inc.	1" Sample Size (g)	Sample Name
1A40105000282FA000000113	23.1	51.6	1	Mylar	4	10	3.5	Rogue Primary
Lab Sample ID	Container ID		Increment Zone	Sampling Media Wt. (g)	Wt. Inc+Media (g)	Increment Weight (g)	Sample METRC ID#	
19JES06-06	Rogue-1		A1	0	3.5	3.5	1A40105000282FA000000114	
19JES06-06	Rogue-1		A1	3.5	7	3.5	1A40105000282FA000000114	
19JES06-06	Rogue-1		A1	7	10.5	3.5	1A40105000282FA000000114	
19JES06-06	Rogue-1		A3	10.5	14	3.5	1A40105000282FA000000114	
19JES06-06	Rogue-1		A3	14	17.5	3.5	1A40105000282FA000000114	
19JES06-06	Rogue-1		A3	17.5	21	3.5	1A40105000282FA000000114	
19JES06-06	Rogue-1		A3	21	24.5	3.5	1A40105000282FA000000114	
19JES06-06	Rogue-1		A4	24.5	28	3.5	1A40105000282FA000000114	
19JES06-06	Rogue-1		A4	28	31.5	3.5	1A40105000282FA000000114	
19JES06-06	Rogue-1		A4	31.5	35.53	4.03	1A40105000282FA000000114	
Totals:		Minimum Sample Size = 34.2g (Usable Marijuana Only)			10	Total Sample Mass = 35.53		
Observations and Abnormalities:	Batch #	Equipment	Cont. Types/Sizes	Uniform	Plant Colors	Shape and Size	Sampling Plan ID & Rev. Date	



**OREGON LIQUOR CONTROL COMMISSION
CANNABIS TRANSPORTATION MANIFEST**



All sales transactions are to be completed prior to transportation of any CANNABIS. The receiving entity may reject product delivered, but amount delivered must be limited to amount agreed upon in prior sales transaction.

Manifest No.	0001935907	Date Created	11/6/2019 4:20 PM
Originating Entity	Extent Solutions Co		For OLCC Use Only
Originating License Number	330-1060126IHH		
Address of Originating Entity	253 E Barnett Rd. #104 Medford, OR 97501		
Phone No. of Originating Entity	971 404 8144		
Contact Phone No. for Inquiries: 971 404 8144			
1. Destination	SC Laboratories	Destination Phone No.	503-272-8830
Destination License Number	010-1004748743D	Date and Approx. Time of Departure	11/6/2019 4:30 PM
Address of Destination	15865 SW 74th Avenue Ste 110 Tigard, OR 97224 County: Washington	Date and Approx. Time of Arrival	11/7/2019 4:30 PM
		Date/Time Received	11-7-19 18:06
		Notes: details for extenuating circumstances (e.g., road closure, flat tire, etc.)	
Route to be Traveled			
Medford Oregon			
Get on I-5 N from N Riverside Ave and OR-62 E 7 min (2.2 mi)			
Follow I-5 N to Lower Boones Ferry Rd in Tualatin. Take exit 290 from I-5 N 3 h 58 min (260 mi)			
Take SW 72nd Ave and SW Durham Rd to SW 74th Ave in Tigard 4 min (1.0 mi) 15865 SW 74th Ave Tigard, OR 97224			
Name of Person Transporting	Joel Glimpse / Scott Forster	Handler Permit No. of Driver	10261982 LA22
State Driver's License No.	9474950 / 625521	Signature of Person Transporting	
Make, Model, License Plate No.	Nissan NV 200 825 KAT		
1. Package Shipped	Production Batch No.	Item Name	Quantity
1A40105000282FA000000114 Lab Test: SubmittedForTesting		rogue (Usable Hemp)	Shp: 35.5300 g
Item Details			
Source Package(s)	1A40105000282FA000000113		
2. Package Shipped	Production Batch No.	Item Name	Quantity
1A40105000282FA000000116 Lab Test: SubmittedForTesting		elektra (Usable Hemp)	Shp: 35.3100 g
Item Details			
Source Package(s)	1A40105000282FA000000115		
3. Package Shipped	Production Batch No.	Item Name	Quantity
1A40105000282FA000000118 Lab Test: SubmittedForTesting		lifter (Usable Hemp)	Shp: 35.6700 g
Item Details			
Source Package(s)	1A40105000282FA000000117		
4. Package Shipped	Production Batch No.	Item Name	Quantity
1A40105000282FA000000120 Lab Test: SubmittedForTesting		hawaiian haze (Usable Hemp)	Shp: 35.4400 g
Item Details			
Source Package(s)	1A40105000282FA000000119		



**OREGON LIQUOR CONTROL COMMISSION
CANNABIS TRANSPORTATION MANIFEST**



All sales transactions are to be completed prior to transportation of any CANNABIS. The receiving entity may reject product delivered, but amount delivered must be limited to amount agreed upon in prior sales transaction.

Manifest No.	0001935907	Date Created	11/6/2019 4:20 PM
5. Package Shipped	Production Batch No.	Item Name	Quantity
1A40105000282FA000000123 Lab Test: SubmittedForTesting		Suver Haze (Usable Hemp)	Shp: 35.2200 g
Item Details			
Source Package(s)	1A40105000282FA000000019		
6. Package Shipped	Production Batch No.	Item Name	Quantity
1A40105000282FA000000124 Lab Test: SubmittedForTesting		sour space candy (Usable Hemp)	Shp: 35.2200 g
Item Details			
Source Package(s)	1A40105000282FA000000121		
PRODUCT REJECTION (if only a portion of shipment is rejected, circle that portion above)			
Name of Person Receiving or Rejecting Product	Leonel Peraza		
I confirm that the contents of this shipment match weight records entered above, and I agree to take custody of those portions of this shipment not circled above. Those portions circled were returned to the individual delivering this shipment.			
Signature	Leonel Peraza	Date	11-7-19
Signature of individual taking receipt of rejected portion of this shipment			

CHAIN OF CUSTODY

SC Laboratories Oregon LLC
 15865 SW 74th Avenue, Ste 110
 Tigard OR, 97224
 (503) 272-8830
 ORELAP ID # 4133
 www.sc-labs.com

Client
 Address Where Sampled: 263 Barnett Medford
 Date Sampled: 11/6/2019
 OLCC License #: 330-10601261HH
 OLCC License Type: Grower
 Email: *m file*
 Phone: *1155107*
 Sampler OLCC License #: 010-1004748743D

Work Order #: 19JES06
Received By: *CJP*
Received Date: 11-7-19
Courier: Joell Scott
Name of Sampler: Joell
Transfer Manifest #: 1155107
Place where Sampled: 263 Barnett Medford

19K0058

Sample Name	Time	METRC Label	Unique Batch Number	SC Labs LIMS ID	Sample Type	Total Sample Mass	# of Increments	TESTS REQUESTED					Sample Specific Notes
								Potency	Water Activity	Moisture Content	Pesticide	Residual Solvent	
Elektra Primary	16:13	1A40105000282FA000000116	Elektra	19JES06-01	U	35.31	10	X	X	X	X	X	
Suver Haze Primary	16:14	1A40105000282FA000000123	Suver Haze	19JES06-02	U	35.22	10	X	X	X	X	X	
Sour Space Candy Primary	16:15	1A40105000282FA000000124	Sour Space Candy	19JES06-03	U	35.22	10	X	X	X	X	X	
Lifter Primary	16:15	1A40105000282FA000000118	Lifter	19JES06-04	U	35.67	10	X	X	X	X	X	
Hawaiian Haze Primary	16:15	1A40105000282FA000000120	Hawaiian Haze	19JES06-05	U	35.44	10	X	X	X	X	X	
Rogue Primary	16:42	1A40105000282FA000000114	Rogue	19JES06-06	U	35.53	10	X	X	X	X	X	

Notes/Special Considerations: Opt OUT of Sample Duplicate Yes No

Samples Relinquished	Samples Received
Print Name: <i>Jonathan Bull</i> Date: <i>11/6/19</i> Representative of: <i>Plain Jane</i> Signature: <i>[Signature]</i> Time: <i>4:25</i>	Print Name: <i>Joel</i> Date: <i>11/6/19</i> Representative of: <i>[Signature]</i> Signature: <i>[Signature]</i> Time: <i>4:25</i>
Print Name: <i>[Signature]</i> Date: <i>11/7/19</i> Representative of: <i>[Signature]</i> Signature: <i>[Signature]</i> Time: <i>[Signature]</i>	Print Name: <i>Scott</i> Date: <i>11/7</i> Representative of: <i>SCC</i> Signature: <i>[Signature]</i> Time: <i>3</i>